

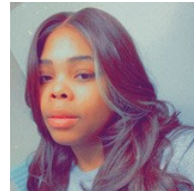


LARMAX HOMES



LaToya Jackson
Lead

latoya@larmaxhomes.com



Keisha McKinney
Lead Medical Technician

keisha@larmaxhomes.com



Tracy Hauri
VP of Finance

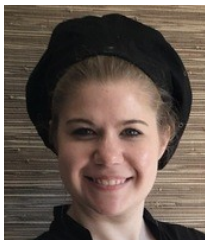
240-599-5051 (Phone)
301-365-3341 (Fax)
tracy@larmaxhomes.com



Shanell Smith
VP of Operations

301-651-1848
shanell@larmaxhomes.com

YOUR IPSWICH TEAM CONTACTS



Maggie Carrick

VP of Food & Dining
610-914-6704

maggie@larmaxhomes.com



Linzeka Fields, RN

Director of Nursing
301-525-1197 (Cell)
301-812-4462 (Fax)

linzeka@larmaxhomes.com



Christine Hayden, RN

Delegating Nurse
240-676-8909 (Cell)
301-812-4462 (Fax)

christine@larmaxhomes.com



Megann Griffith

VP of Engagement
240-534-3130

megann@larmaxhomes.com

MAILING ADDRESS:

5807 IPSWICH ROAD, BETHESDA, MD 20814

BILLING ADDRESS:

LARMAX HOMES P.O. BOX 59664, POTOMAC, MD 20859

HOME PHONES:

301-278-8510 (House) | 301-525-6310 (Cell) | 301-530-0074 (Fax)